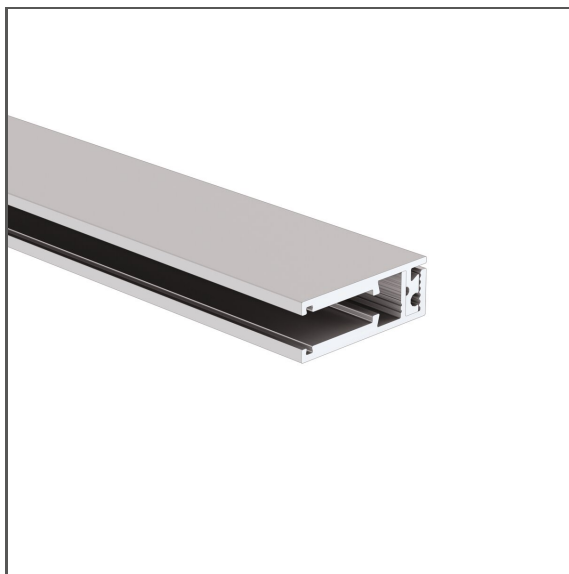


# Profile KRAV-56

Ref. A18017AZM

Ref. arch 18017



- Backlight of transparent panels
- Supported panel thicknesses: 5-6 mm - 0.2-0.24"

## APPLICATION

- decorative edge illumination for transparent panels

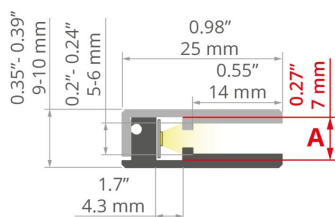
## MOUNTING

- to the edge of the panel, using dedicated double-sided adhesive tape

## ADDITIONAL INFORMATION

- the profile has a decorative function, it is not a construction profile
- standard lengths of KLUŚ profiles and covers: 1000 mm (tolerance  $\pm 1.5$  mm) and 2005 mm / 3010 mm (tolerance + 5 mm); for selected covers: 6050 mm, 10050 mm (tolerance + 5 mm)
- when choosing a different length of profiles / covers than available in the standard, you should additionally choose the cutting service at KLUŚ

## TECHNICAL DRAWING



## TECHNICAL SPECIFICATIONS

Material	aluminum
Color	■ silver anodized
Possible fixture IP	20
Possible fixture shapes	linear
Profile cross-section	rectangular
Width	10 mm
Height	25 mm
LED gluing width A	7 mm
Building type	Entertainment/ Arts, Retail, HoReCa object
Facility zone	furniture, shop windows and exhibition, advertising / POS
Wire out back of extrusion	yes

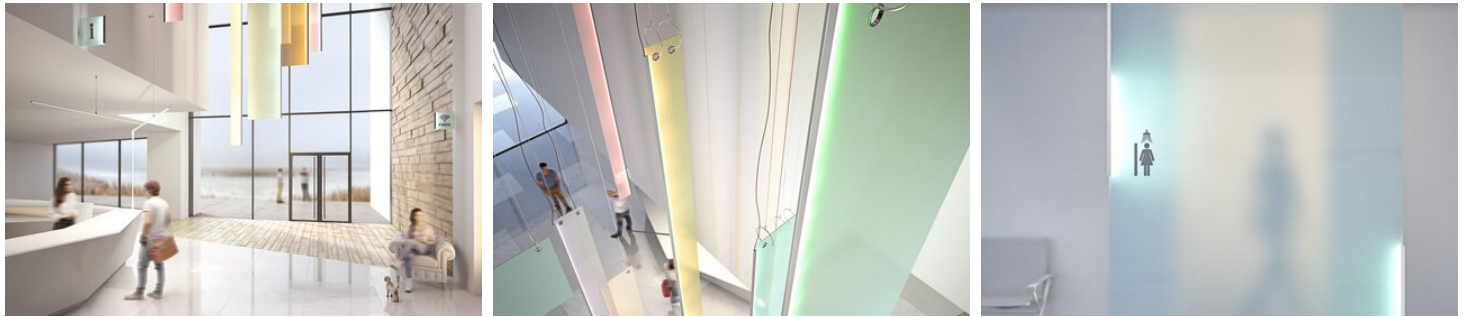
Length	Ref
1000 mm	A18017AZM_1 18017ANODAZM_1
2005 mm	A18017AZM_2 18017ANODAZM_2
3010 mm	A18017AZM_3 18017ANODAZM_3

# Profile KRAV-56

Ref. A18017AZM

Ref. arch 18017

## SAMPLE PROJECTS



## RELATED ACCESSORIES > RELATED END CAPS

NAME	MATERIAL	COLOR	REF.
KRAV-56	PP	gray	C28001C02 24033

## RELATED ACCESSORIES > RELATED LED > ULTRATHIN



### K-1091-24V

K-1091-24

Ref. arch K-1091-24V