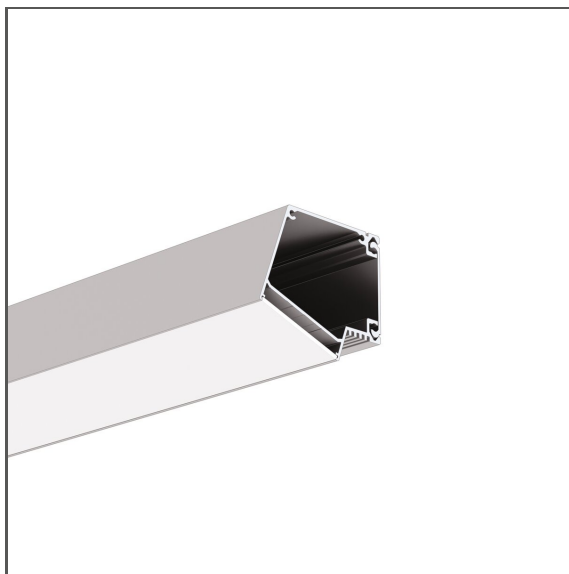


Profile IMET

Ref. A18012

Ref. arch 18012



- Lighting angle: 30 Degrees
- Compartment for driver and electrical components
- Easy maintenance

APPLICATION

- decorative lighting

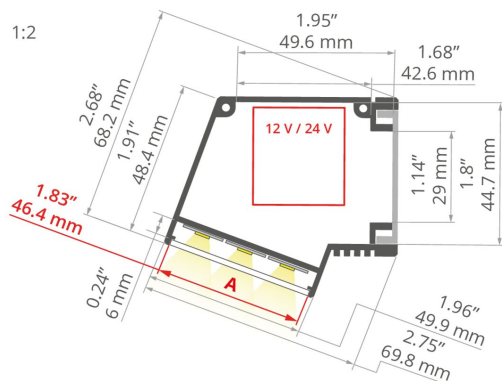
MOUNTING

- to the surface, using a dedicated mounting track and properly selected screws

ADDITIONAL INFORMATION

- the power supply can be secured inside the profile using dedicated accessories
- standard lengths of KLUŚ profiles and covers: 1000 mm (tolerance ± 1.5 mm) and 2005 mm / 3010 mm (tolerance + 5 mm); for selected covers: 6050 mm, 10050 mm (tolerance + 5 mm)
- when choosing a different length of profiles / covers than available in the standard, you should additionally choose the cutting service at KLUŚ

TECHNICAL DRAWING



TECHNICAL SPECIFICATIONS

Material	aluminum
Color	silver anodized
Possible fixture IP	20
Possible fixture shapes	linear
Profile cross-section	rectangular
Width	69.8 mm
Height	68.2 mm
LED gluing width A	46.4 mm
Number of LED strips A (8 mm wide)	5
Lighting at an angle	30
Compartment for power supply	yes
Building type	HoReCa object, Commercial, Residential
Facility zone	office, communication routes and corridors, industrial and technical, wall lighting
The cover is cut to the length of the profile	yes
Wire out back of extrusion	yes
Klasa energetyczna	C

Length	Ref
1000 mm	A18012A_1 18012ANODA_1
2005 mm	A18012A_2 18012ANODA_2
3010 mm	A18012A_3 18012ANODA_3

SAMPLE PROJECTS



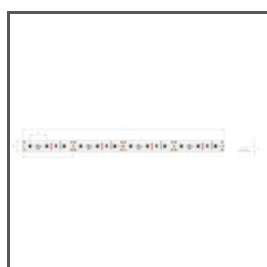
RELATED ACCESSORIES > RELATED COVERS

NAME	MATERIAL	MATERIAL TRANSMITTANCE	COLOR	REF.
HSP-47	PC	73 %	<input type="checkbox"/> frosted	B17051M 17051
		94 %	<input checked="" type="checkbox"/> clear	B17051T 17062

RELATED ACCESSORIES > RELATED END CAPS

NAME	MATERIAL	COLOR	REF.
IMET-P	PP	<input checked="" type="checkbox"/> gray	C24016C02 24016
IMET-L	PP	<input checked="" type="checkbox"/> gray	C24017C02 24017

RELATED ACCESSORIES > RELATED LED



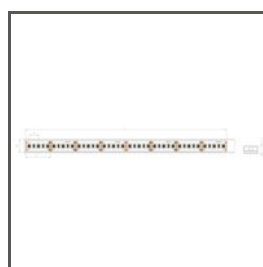
K-1210-12V
K-1210-12
Ref. arch K-1210-12V



K-1275-12V
K-1275-12
Ref. arch K-1275-12V



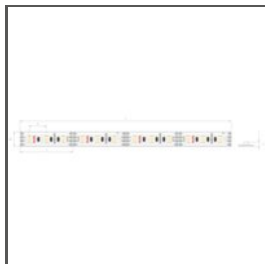
WP-K-1220-12V
KWP-1220-12
Ref. arch WP-K-1220-12V



WP-K-1275-12V
KWP-1275-12
Ref. arch WP-K-1275-12V



WP-K-1220-IP65-12V
_błąd
Ref. arch WP-K-1220-IP65-12V

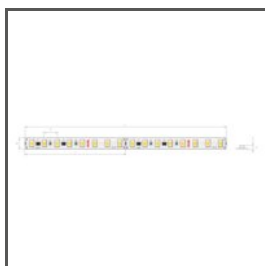


K-1275-RGB-12V

K-RGB-1275-12

Ref. arch K-1275-RGB-12V

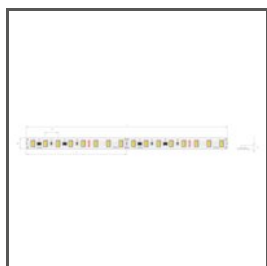
RELATED ACCESSORIES > RELATED LED > HIGH EFFICACY



K-HE-0480-HD-24V

K-HEHD-0480-24

Ref. arch K-HE-0480-HD-24V



K-HE-0960-HD-24V

K-HEHD-0960-24

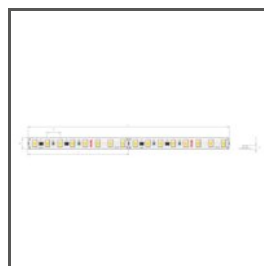
Ref. arch K-HE-0960-HD-24V



K-HE-1440-HD-24V

K-HEHD-1440-24

Ref. arch K-HE-1440-HD-24V



K-HE-1920-HD-24V

K-HEHD-1920-24

Ref. arch K-HE-1920-HD-24V

RELATED ACCESSORIES > RELATED LED > RGB / RGB-W / RGB-CTT



K-1530-RGB+W-24V

K-RGBW-1530-24

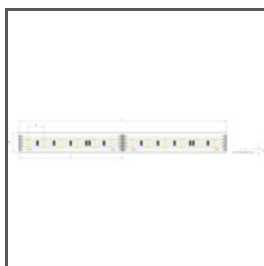
Ref. arch K-1530-RGB+W-24V



WP-K-1530-RGB+W-24V

KWP-RGBW-1530-24

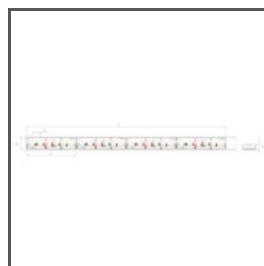
Ref. arch WP-K-1530-RGB+W-24V



K-1920-120-RGB-24V

K-RGB-1920-120-24

Ref. arch K-1920-120-RGB-24V



WP-K-1920-120-RGB-24V

KWP-1920-120-RGB-24

Ref. arch WP-K-1920-120-RGB-24V

RELATED ACCESSORIES > RELATED LED > WHITE MONO



WP-K-1640-HD-IP65-24V

KWP-GHD-1640-24

Ref. arch WP-K-1640-HD-IP65-24V



WP-K-1910-HD-IP65-24V

KWP-GHD-1910-24

Ref. arch WP-K-1910HDIP6524V



WP-K-1220-IP65-24V

KWP-1220-IP65-24

Ref. arch WP-K-1220-IP65-24V

RELATED ACCESSORIES > OTHER RELATED ACCESSORIES > CONDUCTIVE FASTENERS AND HEADS FOR SURFACE



FASTENER

W-BOX-Z

C28253N00

Ref. arch 00643

RELATED ACCESSORIES > OTHER RELATED ACCESSORIES > OTHER



GLAND

6x1,2

C24517C07

Ref. arch 00802



GLAND

19x1,6

C24519C07

Ref. arch 00820

RELATED ACCESSORIES > OTHER RELATED ACCESSORIES > TECHNICAL AND PROTECTIVE INSERTS



MOUNTING PAD

45

Z70457

Ref. arch 70457