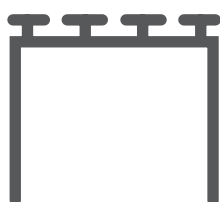


Parts needed to mount the LIPOD extrusion



Extrusion (A)



End caps (B)



Cover (C)



LED strip (D)



Mounting bracket (E)

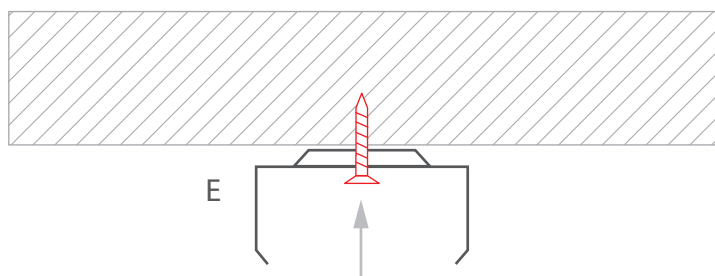
Tools needed for mounting:

- drill
- screwdriver
- screws

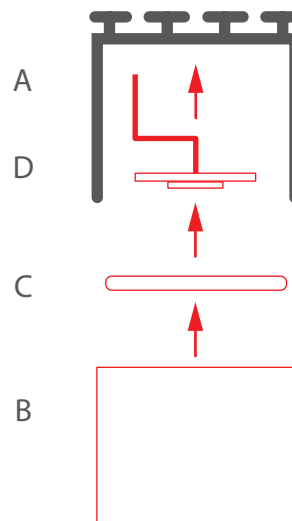
WARNING! All LED strips should be connected to a 12 V or 24 V power supply.

IMPORTANT: The mounting instructions present the basic form of assembly. More methods and related accessories can be found at www.KlusDesign.eu

1. Attach the mounting bracket (A) to the mounting surface with screws.



2. Feed the power cable. Mount the LED strip (D), insert the cover (C), insert the end caps (B).



3. Connect power and mount the extrusion (A) in the mounting bracket (E). There are two ways to connect power: through a hole in the extrusion or through the end cap.

