

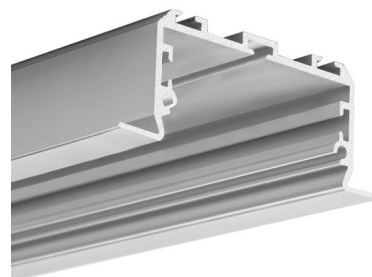
PRODUCT DESCRIPTION

- Simple mounting that does not require plastering and painting the surface afterwards
- Line of light

FINISH :

Silver anodized ☐

*Custom colors available upon request



Fill empty fields

Product nr.	
Fixture type	
Company	
Job name	
Date	

TECHNICAL SPECIFICATION

Application

- for creating serviceable straight and sectioned LED lighting fixtures, mounted in drywal

Assembly

- uses dedicated KMA springs

Additional information

- line of light obtainable with the LIGER-50 cover and LED strips with a minimum of 120 LED /m
- designed for up to four 10 mm wide LED strips
- the cover is evenly illuminated with four LED strips, with fewer strips shadows appear on the cover
- LARKO-50 profile is equipped with ZM sockets on the inside and outside (ZM connectors used to connect profiles lengthwise are easily accessible even after mounting the profile in the ceiling, external sockets are used to mount KMA springs)
- recommended number of springs (assembled in pairs) depending on the length of the profile:

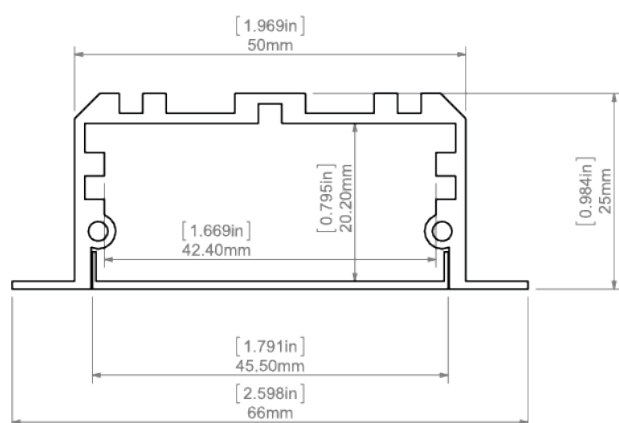
Profile length	1 m	2 m	3 m
Number of KMA springs	6	10	14

- the groove cut out in the drywall to accommodate the profile should be 51mm - 56mm wide
- when mounted in double drywall, the profile does not interfere with the structure

AVAILABLE LENGTHS

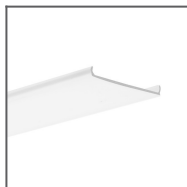
Ref. nr.	surface finish	available lengths
C0756ANODA_1	Silver anodized	1000 mm
C0756ANODA_2	Silver anodized	2000 mm
C0756ANODA_3	Silver anodized	3000 mm

TECHNICAL DRAWING

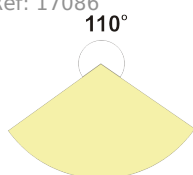


RELATED PRODUCTS

COVERS



LIGER-50 frosted
Cover
Ref: 17086

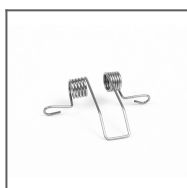


END CAPS



LARKO-50 grey
End cap
Ref: 24298

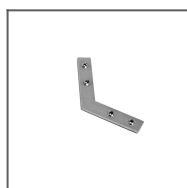
ACCESSORIES



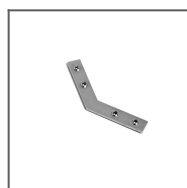
KMA Spring
Ref: 00838V1



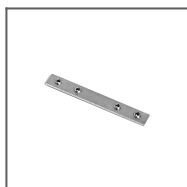
Gland M8X1
Ref: 42265



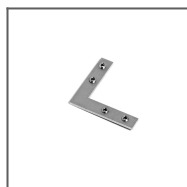
ZM-120
Connector
Ref: 42728



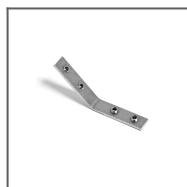
ZM-135
Connector
Ref: 42720



ZM-180
Connector
Ref: 42717



ZM-90 Connector
Ref: 42716



ZM-PION-135
Connector
Ref: 42719



ZM-PION-90
Connector
Ref: 42718

MARKETING MATERIALS



LARKO-50 Foam
Ref: 70264



Display
P230-90155M
Ref: 90155M