

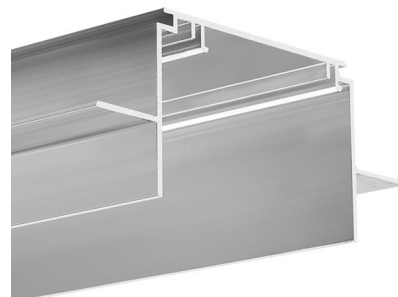
PRODUCT DESCRIPTION

- The mounting strip forms a precise groove in drywall
- Ability to create a line of light with a visible aluminum edge of minimum width

FINISH :

Non anodized (raw) 

*Custom colors available upon request



Fill empty fields

Product nr.	
Fixture type	
Company	
Job name	
Date	

TECHNICAL SPECIFICATION

Application

- for creating easily serviceable built-in lighting fixtures
- for 16 mm(5/8") thick drywall

Assembly

- with screws appropriately selected for the mounting surface

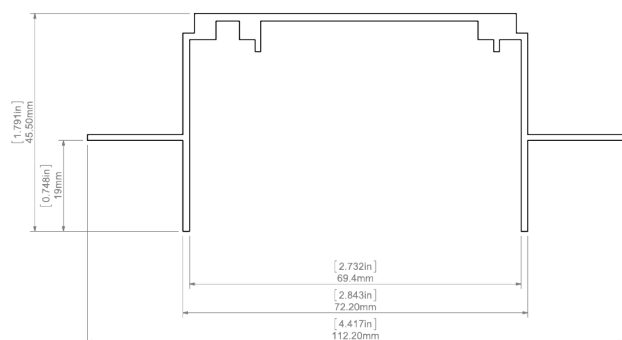
Additional information

- the profile is sold together with blok springs. The Blok springs are mounted in pairs, depending on the profile length: 2 pcs. up to a length of 15cm, 4 pcs. from 15cm to 1m, 6 pcs. up to a length of 2m, 8 pcs. up to a length of 3m

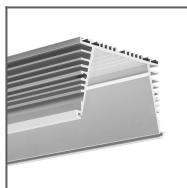
AVAILABLE LENGTHS

Ref. nr.	surface finish	available lengths
18022V1NA_1	Non anodized (raw)	1000 mm
18022V1NA_2	Non anodized (raw)	2000 mm
18022V1NA_3	Non anodized (raw)	3000 mm

TECHNICAL DRAWING



RELATED PROFILES



SEKOMA Profile
Ref: B6595

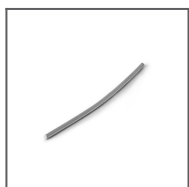
RELATED PRODUCTS

END CAPS



TESE grey End
cap
Ref: 24047V1

ACCESSORIES



BLOK Spring
Ref: 42731V1

MARKETING MATERIALS



Presentation set 4
Ref: 90054