

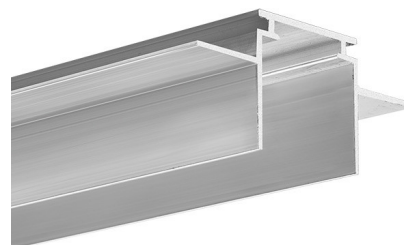
PRODUCT DESCRIPTION

- The mounting strip forms a precise groove in a drywall ceiling
- Ability to create a line of light without visible aluminum edges

FINISH :

Non anodized (raw) 

*Custom colors available upon request



Fill empty fields

| | |
|--------------|--|
| Product nr. | |
| Fixture type | |
| Company | |
| Job name | |
| Date | |

TECHNICAL SPECIFICATION

Application

- for creating easily serviceable built-in lighting fixtures
- for 16 mm (5/8") thick drywall

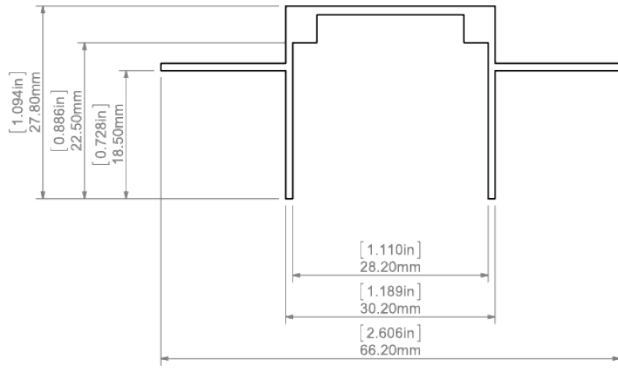
Assembly

- with screws appropriately selected for the mounting surface

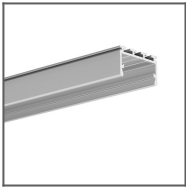
AVAILABLE LENGTHS

| Ref. nr. | surface finish | available lengths |
|-------------|--------------------|-------------------|
| B6638V1NA_1 | Non anodized (raw) | 1000 mm |
| B6638V1NA_2 | Non anodized (raw) | 2000 mm |
| B6638V1NA_3 | Non anodized (raw) | 3000 mm |

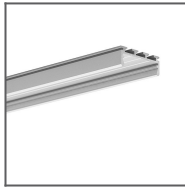
TECHNICAL DRAWING



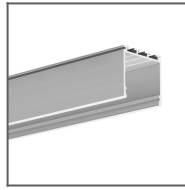
RELATED PROFILES



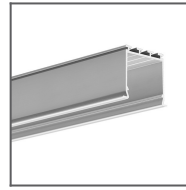
GIZA-LL profile
Ref: C0758



GIZA Profile
Ref: B5556



LIPOD Profile
Ref: B5554



LOKOM Profile
Ref: B5553

RELATED PRODUCTS

END CAPS



TEKNIK End cap
grey
Ref: 24002