

PRODUCT DESCRIPTION

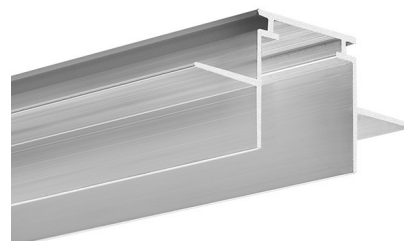
*** Available until stocks are depleted ***

- The mounting strip forms a precise groove in a drywall ceiling
- Ability to create a line of light without visible aluminum edges
- Easy servicing, snapped in

FINISH :

Non anodized (raw) 

*Custom colors available upon request



Fill empty fields

Product nr.	
Fixture type	
Company	
Job name	
Date	

TECHNICAL SPECIFICATION

Application

- for creating easily serviceable built-in lighting fixtures

Assembly

- with screws appropriately selected for the mounting surface

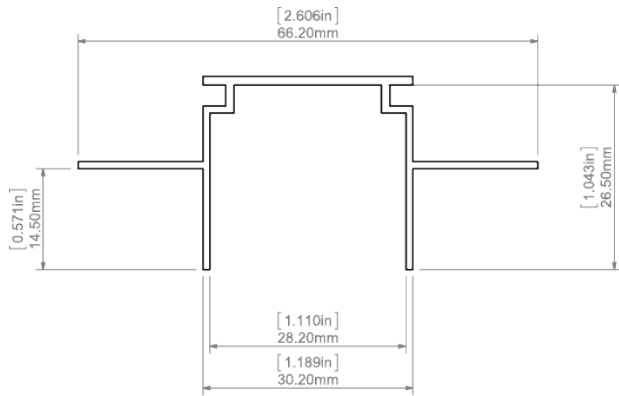
Additional information

- while finishing a surface with the TEKNIK profile inserted, its interior must be protected against contamination
- lighting fixtures compatible with the TEKNIK profile are connected using TEKNIK latches
- TEKNIK latches needs to be purchased separately

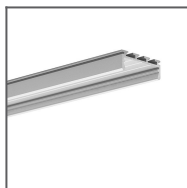
AVAILABLE LENGTHS

Ref. nr.	surface finish	available lengths
B5555V1NA_1	Non anodized (raw)	1000 mm
B5555V1NA_2	Non anodized (raw)	2000 mm
B5555V1NA_3	Non anodized (raw)	3000 mm

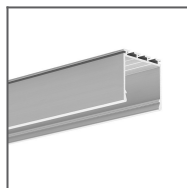
TECHNICAL DRAWING



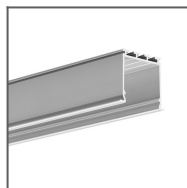
RELATED PROFILES



GIZA Profile
Ref: B5556



LIPOD Profile
Ref: B5554



LOKOM Profile
Ref: B5553

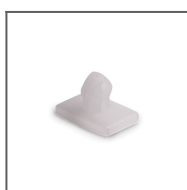
RELATED PRODUCTS

END CAPS



TEKNIK End cap
grey
Ref: 24002

ACCESSORIES



TEKNIK Latch
Ref: 24003