

**PRODUCT DESCRIPTION**

- Copper core 1x0.5mm<sup>2</sup>
- Copper tinned cable
- Has a transparent insulating cover made of FEP

Fill empty fields

Product nr.	
Fixture type	
Company	
Job name	
Date	

**TECHNICAL SPECIFICATION****Application**

For powering and hanging suspended lighting fixtures.

**Additional information**

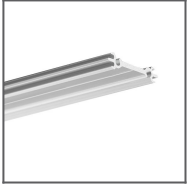
Conductive cable for suspensions, 1.35 mm outside diameter. Copper tinned cable with a transparent FEP plastic coating. Splice and color as in a steel cable.

Dedicated for use in places where poles can short-circuit.

Recommended length of application 1.5m. Outside diameter 1.35 mm

Strength 1.8 kg

**RELATED PROFILES**



JAZ-DUO Profile  
Ref: C0788

## RELATED PRODUCTS

### END CAPS



JAZ-DUO-W grey  
electricity  
conductive End  
cap  
Ref: 42633

### ACCESSORIES



PUSZ-LIN-LEB  
Fastener  
Ref: 42259



PUSZ-LIN-MR  
Fastener  
Ref: 42258



PUSZ-LIN-ZD  
Fastener  
Ref: 42257



PUSZ-LIN-ZM  
Fastener  
Ref: 42256